

ISSN 1726-5479

SENSORS & TRANSDUCERS

3^{vol. 14-2}
Special
/12



Physical and Chemical Sensors & Wireless Sensor Networks

International Frequency Sensor Association Publishing



Editors-in-Chief: Sergey Y. Yurish, tel.: +34 93 413 7941, e-mail: editor@sensorsportal.com

Editors for Western Europe

Meijer, Gerard C.M., Delft University of Technology, The Netherlands
Ferrari, Vittorio, Università di Brescia, Italy

Editor for Eastern Europe

Sachenko, Anatoly, Ternopil State Economic University, Ukraine

Editors for North America

Datskos, Panos G., Oak Ridge National Laboratory, USA
Fabien, J. Josse, Marquette University, USA
Katz, Evgeny, Clarkson University, USA

Editor South America

Costa-Felix, Rodrigo, Inmetro, Brazil

Editor for Africa

Maki K.Habib, American University in Cairo, Egypt

Editor for Asia

Ohyama, Shinji, Tokyo Institute of Technology, Japan

Editor for Asia-Pacific

Mukhopadhyay, Subhas, Massey University, New Zealand

Editorial Advisory Board

- Abdul Rahim, Ruzairi, Universiti Teknologi, Malaysia
Ahmad, Mohd Noor, Nothern University of Engineering, Malaysia
Annamalai, Karthikeyan, National Institute of Advanced Industrial Science and Technology, Japan
Arcega, Francisco, University of Zaragoza, Spain
Arguel, Philippe, CNRS, France
Ahn, Jae-Pyoung, Korea Institute of Science and Technology, Korea
Arndt, Michael, Robert Bosch GmbH, Germany
Ascoli, Giorgio, George Mason University, USA
Atalay, Selcuk, Inonu University, Turkey
Atghiaee, Ahmad, University of Tehran, Iran
Augutis, Vyantas, Kaunas University of Technology, Lithuania
Avachit, Patil Lalchand, North Maharashtra University, India
Ayesh, Aladdin, De Montfort University, UK
Azamimi, Azian binti Abdullah, Universiti Malaysia Perlis, Malaysia
Bahreyni, Behraad, University of Manitoba, Canada
Baliga, Shankar, B., General Monitors Transnational, USA
Baoxian, Ye, Zhengzhou University, China
Barford, Lee, Agilent Laboratories, USA
Barlingay, Ravindra, RF Arrays Systems, India
Basu, Sukumar, Jadavpur University, India
Beck, Stephen, University of Sheffield, UK
Ben Bouzid, Sihem, Institut National de Recherche Scientifique, Tunisia
Benachaiba, Chellali, Universitaire de Bechar, Algeria
Binnie, T. David, Napier University, UK
Bischoff, Gerlinde, Inst. Analytical Chemistry, Germany
Bodas, Dhananjay, IMTEK, Germany
Borges Carval, Nuno, Universidade de Aveiro, Portugal
Bouchikhi, Benachir, University Moulay Ismail, Morocco
Bousbia-Salah, Mounir, University of Annaba, Algeria
Bouvet, Marcel, CNRS – UPMC, France
Brudzewski, Kazimierz, Warsaw University of Technology, Poland
Cai, Chenxin, Nanjing Normal University, China
Cai, Qingyun, Hunan University, China
Calvo-Gallego, Jaime, Universidad de Salamanca, Spain
Campanella, Luigi, University La Sapienza, Italy
Carvalho, Vitor, Minho University, Portugal
Cecelja, Franjo, Brunel University, London, UK
Cerde Belmonte, Judith, Imperial College London, UK
Chakrabarty, Chandan Kumar, Universiti Tenaga Nasional, Malaysia
Chakravorty, Dipankar, Association for the Cultivation of Science, India
Changhai, Ru, Harbin Engineering University, China
Chaudhari, Gajanan, Shri Shivaji Science College, India
Chavali, Murthy, N.I. Center for Higher Education, (N.I. University), India
Chen, Jiming, Zhejiang University, China
Chen, Rongshun, National Tsing Hua University, Taiwan
Cheng, Kuo-Sheng, National Cheng Kung University, Taiwan
Chiang, Jeffrey (Cheng-Ta), Industrial Technol. Research Institute, Taiwan
Chiriac, Horia, National Institute of Research and Development, Romania
Chowdhuri, Arijit, University of Delhi, India
Chung, Wen-Yaw, Chung Yuan Christian University, Taiwan
Corres, Jesus, Universidad Publica de Navarra, Spain
Cortes, Camilo A., Universidad Nacional de Colombia, Colombia
Courtois, Christian, Universite de Valenciennes, France
Cusano, Andrea, University of Sannio, Italy
D'Amico, Arnaldo, Università di Tor Vergata, Italy
De Stefano, Luca, Institute for Microelectronics and Microsystem, Italy
Deshmukh, Kiran, Shri Shivaji Mahavidyalaya, Barshi, India
Dickert, Franz L., Vienna University, Austria
Dieguez, Angel, University of Barcelona, Spain
Dighavkar, C. G., M.G. Vidyamandir's L. V.H. College, India
Dimitropoulos, Panos, University of Thessaly, Greece
Ding, Jianning, Jiangsu Polytechnic University, China
Djordjevich, Alexandar, City University of Hong Kong, Hong Kong
Donato, Nicola, University of Messina, Italy
Donato, Patricio, Universidad de Mar del Plata, Argentina
Dong, Feng, Tianjin University, China
Drljaca, Predrag, Instersema Sensoric SA, Switzerland
Dubey, Venketesh, Bournemouth University, UK
Enderle, Stefan, Univ.of Ulm and KTB Mechatronics GmbH, Germany
Erdem, Gursan K. Arzum, Ege University, Turkey
Erkmen, Aydan M., Middle East Technical University, Turkey
Estelle, Patrice, Insa Rennes, France
Estrada, Horacio, University of North Carolina, USA
Faiz, Adil, INSA Lyon, France
Fericean, Sorin, Balluff GmbH, Germany
Fernandes, Joana M., University of Porto, Portugal
Francioso, Luca, CNR-IMM Institute for Microelectronics and Microsystems, Italy
Francis, Laurent, University Catholique de Louvain, Belgium
Fu, Weiling, South-Western Hospital, Chongqing, China
Gaura, Elena, Coventry University, UK
Geng, Yanfeng, China University of Petroleum, China
Gole, James, Georgia Institute of Technology, USA
Gong, Hao, National University of Singapore, Singapore
Gonzalez de la Rosa, Juan Jose, University of Cadiz, Spain
Granel, Annette, Goteborg University, Sweden
Graff, Mason, The University of Texas at Arlington, USA
Guan, Shan, Eastman Kodak, USA
Guillet, Bruno, University of Caen, France
Guo, Zhen, New Jersey Institute of Technology, USA
Gupta, Narendra Kumar, Napier University, UK
Hadjiloucas, Sillas, The University of Reading, UK
Haider, Mohammad R., Sonoma State University, USA
Hashsham, Syed, Michigan State University, USA
Hasni, Abdelhafid, Bechar University, Algeria
Hernandez, Alvaro, University of Alcalá, Spain
Hernandez, Wilmar, Universidad Politecnica de Madrid, Spain
Homentcovschi, Dorel, SUNY Binghamton, USA
Horstman, Tom, U.S. Automation Group, LLC, USA
Hsiai, Tzung (John), University of Southern California, USA
Huang, Jeng-Sheng, Chung Yuan Christian University, Taiwan
Huang, Star, National Tsing Hua University, Taiwan
Huang, Wei, PSG Design Center, USA
Hui, David, University of New Orleans, USA
Jaffrezic-Renault, Nicole, Ecole Centrale de Lyon, France
James, Daniel, Griffith University, Australia
Janting, Jakob, DELTA Danish Electronics, Denmark
Jiang, Liudi, University of Southampton, UK
Jiang, Wei, University of Virginia, USA
Jiao, Zheng, Shanghai University, China
John, Joachim, IMEC, Belgium
Kalach, Andrew, Voronezh Institute of Ministry of Interior, Russia
Kang, Moonho, Sunmoon University, Korea South
Kaniusas, Eugenijus, Vienna University of Technology, Austria
Katake, Anup, Texas A&M University, USA
Kausel, Wilfried, University of Music, Vienna, Austria
Kavasoglu, Nese, Mugla University, Turkey
Ke, Cathy, Tyndall National Institute, Ireland
Khelfaoui, Rachid, Université de Bechar, Algeria
Khan, Asif, Aligarh Muslim University, Aligarh, India
Kim, Min Young, Kyungpook National University, Korea South
Ko, Sang Choon, Electronics. and Telecom. Research Inst., Korea South
Kotulska, Malgorzata, Wroclaw University of Technology, Poland
Kockar, Hakan, Balikesir University, Turkey

Kong, Ing, RMIT University, Australia
Kratz, Henrik, Uppsala University, Sweden
Krishnamoorthy, Ganesh, University of Texas at Austin, USA
Kumar, Arun, University of Delaware, Newark, USA
Kumar, Subodh, National Physical Laboratory, India
Kung, Chih-Hsien, Chang-Jung Christian University, Taiwan
Lacnjevac, Caslav, University of Belgrade, Serbia
Lay-Ekuakille, Aime, University of Lecce, Italy
Lee, Jang Myung, Pusan National University, Korea South
Lee, Jun Su, Amkor Technology, Inc. South Korea
Lei, Hua, National Starch and Chemical Company, USA
Li, Fengyuan (Thomas), Purdue University, USA
Li, Genxi, Nanjing University, China
Li, Hui, Shanghai Jiaotong University, China
Li, Xian-Fang, Central South University, China
Li, Yuefa, Wayne State University, USA
Liang, Yuanchang, University of Washington, USA
Liawruangrath, Saisunee, Chiang Mai University, Thailand
Liew, Kim Meow, City University of Hong Kong, Hong Kong
Lin, Hermann, National Kaohsiung University, Taiwan
Lin, Paul, Cleveland State University, USA
Linderholm, Pontus, EPFL - Microsystems Laboratory, Switzerland
Liu, Aihua, University of Oklahoma, USA
Liu Changgeng, Louisiana State University, USA
Liu, Cheng-Hsien, National Tsing Hua University, Taiwan
Liu, Songqin, Southeast University, China
Lodeiro, Carlos, University of Vigo, Spain
Lorenzo, Maria Encarnacio, Universidad Autonoma de Madrid, Spain
Lukaszewicz, Jerzy Pawel, Nicholas Copernicus University, Poland
Ma, Zhanfang, Northeast Normal University, China
Majstorovic, Vidosav, University of Belgrade, Serbia
Malyshev, V.V., National Research Centre 'Kurchatov Institute', Russia
Marquez, Alfredo, Centro de Investigacion en Materiales Avanzados, Mexico
Matay, Ladislav, Slovak Academy of Sciences, Slovakia
Mathur, Prafull, National Physical Laboratory, India
Maurya, D.K., Institute of Materials Research and Engineering, Singapore
Mekid, Samir, University of Manchester, UK
Melnyk, Ivan, Photon Control Inc., Canada
Mendes, Paulo, University of Minho, Portugal
Mennell, Julie, Northumbria University, UK
Mi, Bin, Boston Scientific Corporation, USA
Minas, Graca, University of Minho, Portugal
Moghavvemi, Mahmoud, University of Malaya, Malaysia
Mohammadi, Mohammad-Reza, University of Cambridge, UK
Molina Flores, Esteban, Benemérita Universidad Autónoma de Puebla, Mexico
Moradi, Majid, University of Kerman, Iran
Morello, Rosario, University "Mediterranea" of Reggio Calabria, Italy
Mounir, Ben Ali, University of Sousse, Tunisia
Mrad, Nezih, Defence R&D, Canada
Mulla, Imtiaz Sirajuddin, National Chemical Laboratory, Pune, India
Nabok, Aleksey, Sheffield Hallam University, UK
Neelamegam, Periasamy, Sastra Deemed University, India
Neshkova, Milka, Bulgarian Academy of Sciences, Bulgaria
Oberhammer, Joachim, Royal Institute of Technology, Sweden
Ould Lahoucine, Cherif, University of Guelma, Algeria
Pamidighanta, Sayanu, Bharat Electronics Limited (BEL), India
Pan, Jisheng, Institute of Materials Research & Engineering, Singapore
Park, Joon-Shik, Korea Electronics Technology Institute, Korea South
Penza, Michele, ENEA C.R., Italy
Pereira, Jose Miguel, Instituto Politecnico de Seteбал, Portugal
Petsev, Dimiter, University of New Mexico, USA
Pogacnik, Lea, University of Ljubljana, Slovenia
Post, Michael, National Research Council, Canada
Prance, Robert, University of Sussex, UK
Prasad, Ambika, Gulbarga University, India
Prateepasen, Asa, Kingmoungut's University of Technology, Thailand
Pugno, Nicola M., Politecnico di Torino, Italy
Pullini, Daniele, Centro Ricerche FIAT, Italy
Pumera, Martin, National Institute for Materials Science, Japan
Radhakrishnan, S., National Chemical Laboratory, Pune, India
Rajanna, K., Indian Institute of Science, India
Ramadan, Qasem, Institute of Microelectronics, Singapore
Rao, Basuthkar, Tata Inst. of Fundamental Research, India
Raouf, Kosai, Joseph Fourier University of Grenoble, France
Rastogi Shiva, K., University of Idaho, USA
Reig, Candid, University of Valencia, Spain
Restivo, Maria Teresa, University of Porto, Portugal
Robert, Michel, University Henri Poincare, France
Rezazadeh, Ghader, Urmia University, Iran
Royo, Santiago, Universitat Politecnica de Catalunya, Spain
Rodriguez, Angel, Universidad Politecnica de Cataluna, Spain
Rothberg, Steve, Loughborough University, UK
Sadana, Ajit, University of Mississippi, USA
Sadeghian Marnani, Hamed, TU Delft, The Netherlands
Sapozhnikova, Ksenia, D.I.Mendeleyev Institute for Metrology, Russia
Sandacci, Serghei, Sensor Technology Ltd., UK
Saxena, Vibha, Bbhba Atomic Research Centre, Mumbai, India
Schneider, John K., Ultra-Scan Corporation, USA
Sengupta, Deepak, Advance Bio-Photonics, India
Seif, Selemeni, Alabama A & M University, USA
Seifter, Achim, Los Alamos National Laboratory, USA
Shah, Kriyang, La Trobe University, Australia
Sankarraj, Anand, Detector Electronics Corp., USA
Silva Girao, Pedro, Technical University of Lisbon, Portugal
Singh, V. R., National Physical Laboratory, India
Slomovitz, Daniel, UTE, Uruguay
Smith, Martin, Open University, UK
Soleymanpour, Ahmad, Damghan Basic Science University, Iran
Somani, Prakash R., Centre for Materials for Electronics Technol., India
Sridharan, M., Sastra University, India
Srinivas, Talabattula, Indian Institute of Science, Bangalore, India
Srivastava, Arvind K., NanoSonix Inc., USA
Stefan-van Staden, Raluca-Ioana, University of Pretoria, South Africa
Stefanescu, Dan Mihai, Romanian Measurement Society, Romania
Sumriddetchka, Sarun, National Electronics and Computer Technology Center, Thailand
Sun, Chengliang, Polytechnic University, Hong-Kong
Sun, Dongming, Jilin University, China
Sun, Junhua, Beijing University of Aeronautics and Astronautics, China
Sun, Zhiqing, Central South University, China
Suri, C. Raman, Institute of Microbial Technology, India
Sysoev, Victor, Saratov State Technical University, Russia
Szewczyk, Roman, Industrial Research Inst. for Automation and Measurement, Poland
Tan, Ooi Kiang, Nanyang Technological University, Singapore
Tang, Dianping, Southwest University, China
Tang, Jaw-Luen, National Chung Cheng University, Taiwan
Teker, Kasif, Frostburg State University, USA
Thirunavukkarasu, I., Manipal University Karnataka, India
Thumavanam Pad, Kartik, Carnegie Mellon University, USA
Tian, Gui Yun, University of Newcastle, UK
Tsiantos, Vassilios, Technological Educational Institute of Kaval, Greece
Tsigara, Anna, National Hellenic Research Foundation, Greece
Twomey, Karen, University College Cork, Ireland
Valente, Antonio, University, Vila Real, - U.T.A.D., Portugal
Vanga, Raghav Rao, Summit Technology Services, Inc., USA
Vaseashta, Ashok, Marshall University, USA
Vazquez, Carmen, Carlos III University in Madrid, Spain
Vieira, Manuela, Instituto Superior de Engenharia de Lisboa, Portugal
Vigna, Benedetto, STMicroelectronics, Italy
Vrba, Radimir, Brno University of Technology, Czech Republic
Wandelt, Barbara, Technical University of Lodz, Poland
Wang, Jiangping, Xi'an Shiyou University, China
Wang, Kedong, Beihang University, China
Wang, Liang, Pacific Northwest National Laboratory, USA
Wang, Mi, University of Leeds, UK
Wang, Shinn-Fwu, Ching Yun University, Taiwan
Wang, Wei-Chih, University of Washington, USA
Wang, Wensheng, University of Pennsylvania, USA
Watson, Steven, Center for NanoSpace Technologies Inc., USA
Weiping, Yan, Dalian University of Technology, China
Wells, Stephen, Southern Company Services, USA
Wolkenberg, Andrzej, Institute of Electron Technology, Poland
Woods, R. Clive, Louisiana State University, USA
Wu, DerHo, National Pingtung Univ. of Science and Technology, Taiwan
Wu, Zhaoyang, Hunan University, China
Xiu Tao, Ge, Chuzhou University, China
Xu, Lisheng, The Chinese University of Hong Kong, Hong Kong
Xu, Sen, Drexel University, USA
Xu, Tao, University of California, Irvine, USA
Yang, Dongfang, National Research Council, Canada
Yang, Shuang-Hua, Loughborough University, UK
Yang, Wuqiang, The University of Manchester, UK
Yang, Xiaoling, University of Georgia, Athens, GA, USA
Yaping Dan, Harvard University, USA
Ymeti, Aurel, University of Twente, Netherland
Yong Zhao, Northeastern University, China
Yu, Haihu, Wuhan University of Technology, China
Yuan, Yong, Massey University, New Zealand
Yufera Garcia, Alberto, Seville University, Spain
Zakaria, Zulkarnay, University Malaysia Perlis, Malaysia
Zagnoni, Michele, University of Southampton, UK
Zamani, Cyrus, Universitat de Barcelona, Spain
Zeni, Luigi, Second University of Naples, Italy
Zhang, Minglong, Shanghai University, China
Zhang, Qintao, University of California at Berkeley, USA
Zhang, Weiping, Shanghai Jiao Tong University, China
Zhang, Wenming, Shanghai Jiao Tong University, China
Zhang, Xueji, World Precision Instruments, Inc., USA
Zhong, Haoxiang, Henan Normal University, China
Zhu, Qing, Fujifilm Dimatix, Inc., USA
Zorzano, Luis, Universidad de La Rioja, Spain
Zourob, Mohammed, University of Cambridge, UK

Contents

Volume 14-2
Special Issue
March 2012

www.sensorsportal.com

ISSN 1726-5479

Research Articles

Information Extraction from Wireless Sensor Networks: System and Approaches <i>Tariq Alsboui, Abdelrahman Abuarqoub, Mohammad Hammoudeh, Zuhair Bandar, Andy Nisbet...</i>	1
Assessment of Software Modeling Techniques for Wireless Sensor Networks: A Survey <i>John Khalil Jacoub, Ramiro Liscano, Jeremy S. Bradbury</i>	18
Effective Management and Energy Efficiency in Management of Very Large Scale Sensor Network <i>Moran Feldman, Sharoni Feldman</i>	47
Energy Efficient in-Sensor Data Cleaning for Mining Frequent Itemsets <i>Jacques M. Bahi, Abdallah Makhoul, Maguy Medlej</i>	64
IPv6 Routing Protocol for Low Power and Lossy Sensor Networks Simulation Studies <i>Leila Ben Saad, Cedric Chauvenet, Bernard Tourancheau</i>	79
Self-Powered Intelligent Sensor Node Concept for Monitoring of Road and Traffic Conditions <i>Sebastian Strache, Ralf Wunderlich and Stefan Heinen</i>	93
Variable Step Size LMS Algorithm for Data Prediction in Wireless Sensor Networks <i>Biljana Risteska Stojkoska, Dimitar Solev, Danco Davcev</i>	111
A Framework for Secure Data Delivery in Wireless Sensor Networks <i>Leonidas Perlepes, Alexandros Zaharis, George Stamoulis and Panagiotis Kikiras</i>	125
An Approach for Designing and Implementing Middleware in Wireless Sensor Networks <i>Ronald Beaubrun, Jhon-Fredy Llano-Ruiz, Alejandro Quintero</i>	150
Mobility Model for Self-Organizing and Cooperative MSN and MANET Systems <i>Andrzej Sikora and Ewa Niewiadomska-Szynkiewicz</i>	164
Evaluation of Hybrid Distributed Least Squares for Improved Localization via Algorithm Fusion in Wireless Sensor Networks <i>Ralf Behnke, Jakob Salzmann, Philipp Gorski, Dirk Timmermann</i>	179
An Effective Approach for Handling both Open and Closed Voids in Wireless Sensor Networks <i>Mohamed Aissani, Sofiane Bouznad, Abdelmalek Hariza and Salah-Eddine Allia</i>	196
Embedded Wireless System for Pedestrian Localization in Indoor Environments <i>Nicolas Fourty, Yoann Charlon, Eric Campo</i>	211
Neighbourtables – A Cross-layer Solution for Wireless CiNet Network Analysis and Diagnostics <i>Ismo Hakala and Timo Hongell</i>	228

A Column Generation based Heuristic to extend Lifetime in Wireless Sensor Network <i>Karine Deschinkel</i>	242
Adapting OLSR for WSNs (iOLSR) Using Locally Increasing Intervals <i>Erlend Larsen, Joakim Flathagen, Vinh Pham, Lars Landmark</i>	254
Risk Assessment along Supply Chain: A RFID and Wireless Sensor Network Integration Approach <i>Laurent Gomez, Maryline Laurent, Ethmane El Moustaine</i>	269
Structure Crack Identification Based on Surface-mounted Active Sensor Network with Time-Domain Feature Extraction and Neural Network <i>Chunling Du, Jianqiang Mou, L. Martua, Shudong Liu, Bingjin Chen, Jingliang Zhang, F. L. Lewis.</i>	283
Efficient Gatherings in Wireless Sensor Networks Using Distributed Computation of Connected Dominating Sets <i>Vincent Boudet, Sylvain Durand, László Gönczy, Jérôme Mathieu and Jérôme Palaysi</i>	297
Secure Packet Transfer in Wireless Sensor Networks <i>Yenumula B. Reddy</i>	308

Authors are encouraged to submit article in MS Word (doc) and Acrobat (pdf) formats by e-mail: editor@sensorsportal.com
Please visit journal's webpage with preparation instructions: <http://www.sensorsportal.com/HTML/DIGEST/Submission.htm>

International Frequency Sensor Association (IFSA).

IMAGE SENSORS 2012
TWO DAY INTERTECHPIRA CONFERENCE PLUS EXPERT PRE-CONFERENCE WORKSHOPS
FOCUS ON DIGITAL IMAGING

PRESENTATIONS FROM:

- SoftKinetic
- BBC
- NASA
- NHS
- Leica Geosystems
- Sony Ericsson
- OLYMPUS
- Panasonic
- SIEMENS
- raytrix
- BOSCH
- SAFRAN
- Leti
- caeleste
- PELCO
- SONY
- Aptina
- NMK

SUPPORTING PARTNERS:

- Plastic
- IFSA
- 3D Packaging
- imaging and machine vision
- Micronews
- cmva

REGISTER NOW IMAGE-SENSORS.COM

OVERVIEW [WHY ATTEND](#) [TUES 20 MAR](#) [WED 21 MAR](#) [THURS 22 MAR](#) [VENUE](#)

IMAGE SENSORS 2012
20-22 March
Hotel Russell
London

IS 2012

The 6th International Conference on Sensor Technologies and Applications



SENSORCOMM 2012

19 - 24 August 2012 - Rome, Italy

Deadline for papers: 5 April 2012



Tracks: Architectures, protocols and algorithms of sensor networks - Energy, management and control of sensor networks - Resource allocation, services, QoS and fault tolerance in sensor networks - Performance, simulation and modelling of sensor networks - Security and monitoring of sensor networks - Sensor circuits and sensor devices - Radio issues in wireless sensor networks - Software, applications and programming of sensor networks - Data allocation and information in sensor networks - Deployments and implementations of sensor networks - Under water sensors and systems - Energy optimization in wireless sensor networks

<http://www.aria.org/conferences2012/SENSORCOMM12.html>

The 3rd International Conference on Sensor Device Technologies and Applications



SENSORDEVICES 2012

19 - 24 August 2012 - Rome, Italy

Deadline for papers: 5 April 2012



Tracks: Sensor devices - Ultrasonic and Piezosensors - Photonics - Infrared - Geosensors - Sensor device technologies - Sensors signal conditioning and interfacing circuits - Medical devices and sensors applications - Sensors domain-oriented devices, technologies, and applications - Sensor-based localization and tracking technologies

<http://www.aria.org/conferences2012/SENSORDEVICES12.html>

The 5th International Conference on Advances in Circuits, Electronics and Micro-electronics



CENICS 2012

19 - 24 August 2012 - Rome, Italy

Deadline for papers: 5 April 2012



Tracks: Semiconductors and applications - Design, models and languages - Signal processing circuits - Arithmetic computational circuits - Microelectronics - Electronics technologies - Special circuits - Consumer electronics - Application-oriented electronics

<http://www.aria.org/conferences2012/CENICS12.html>

Variable Step Size LMS Algorithm for Data Prediction in Wireless Sensor Networks

¹ Biljana RISTESKA STOJKOSKA, ² Dimitar SOLEV, ³ Danco DAVCEV

¹ Faculty of Computer Science and Engineering, Ss. Cyril and Methodius University,
Skopje, 1000, Macedonia
Tel.: +38923099157

² Faculty of Computer Science and Engineering, Ss. Cyril and Methodius University,
Skopje, 1000, Macedonia

³ University for Information Science & Technology St. Paul the Apostle, Ohrid, 6000, Macedonia
Tel.: +38946550001, fax: + 38946550004

E-mail: biljana.stojkoska@finki.ukim.mk, dimitar.solev@gmail.com, dancho.davchev@uist.edu.mk

Received: 15 November 2011 /Accepted: 20 December 2011 /Published: 12 March 2012

Abstract: Wireless communication itself consumes the most amount of energy in a given WSN, so the most logical way to reduce the energy consumption is to reduce the number of radio transmissions. To address this issue, there have been developed *data reduction strategies* which reduce the amount of sent data by predicting the measured values both at the source and the sink, requiring transmission only if a certain reading differs by a given margin from the predicted values. While these strategies often provide great reduction in power consumption, they need a-priori knowledge of the explored domain in order to correctly model the expected values. Using a widely known mathematical apparatus called the Least Mean Square Algorithm (LMS), it is possible to get great energy savings while eliminating the need of former knowledge or any kind of modeling. In this paper with we use the Least Mean Square Algorithm with variable step size (LMS-VSS) parameter. By applying this algorithm on real-world dataset, we achieved maximum data reduction of over 95% for star topology and around 97 % when data aggregation was taken into account for cluster-based topology, both for error margin of 0.5°C. Using mean square error as metric for evaluation, we show that our algorithm outperforms classical LMS technique. *Copyright © 2012 IFSA.*

Keywords: Wireless sensor network, Data prediction, Least mean square algorithm, Time series forecasting.

1. Introduction

By being inherently distributed systems, WSN allow not only measuring the temporal progression of the ascertained quantity but also provide the ability to take the spatial progression of this quantity as well. By reporting data measurement at each interval, the node itself consumes a great deal of energy, thus, it vastly reduces its lifetime and creates sufficient communication overhead.

There are several techniques that have been developed to overcome these problems i.e., to lower the communication overhead, to increase energy saving and maximize CPU utilization.

Since wireless communication itself consumes the most amount of energy in a given WSN, the most logical way to reduce the energy consumption is to reduce the number of radio transmissions.

Data-reduction techniques aim to reduce the data to be delivered to the sink. These techniques can be divided into three main groups (Fig. 1): data compression, data prediction and in-network processing [1].

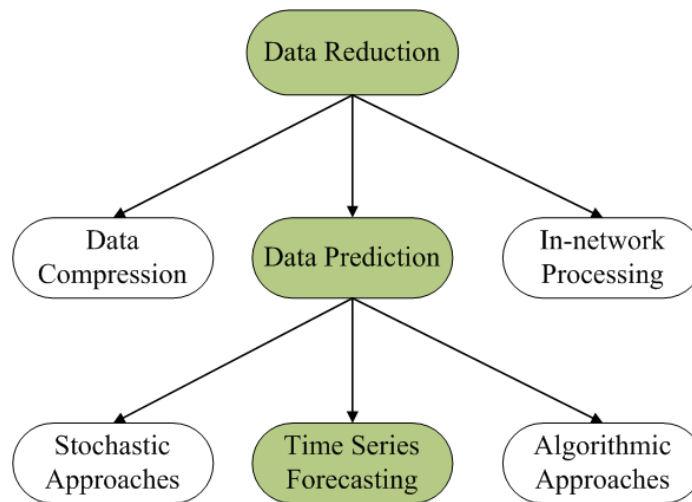


Fig. 1. Data-driven approach for energy saving in WSN [1].

Data compression is applied to reduce the amount of information sent by source nodes. This scheme involves coding strategy used to represent data regardless of their semantics.

In-network processing performs data aggregation while data is routed towards the sink node. Data aggregation aims to transform the raw data into less voluminous refined data. It can be achieved with summarization functions (*minimum*, *maximum* and *average*). For applications that require original and accurate measurements, such a summarization may be inappropriate since it represents an accuracy loss [2].

Data prediction techniques usually maintain two instances of a model in the network, one residing at the sink and the other at the sensor. The model at the sink can be used to answer queries without requiring any communication, so the original data can be easily reconstructed within a certain degree of precision. To avoid a rapid deterioration in the predicted values, such approaches thus need their models to be periodically validated and correspondingly updated, implying again increased communication costs.

Data prediction techniques can be divided into three subclasses: stochastic approaches, time series

forecasting and algorithmic approaches, which are application specific (Fig. 1).

Stochastic approach is used when sensed phenomena can be considered as a random process by means of probability density function. Although this approach is general, its computational overhead makes it inappropriate for tiny sensors with limited computational capacities.

The most appropriate models for data prediction in WSN are those based on time series forecasting. Moving Average (MA), Auto-Regressive (AR) or Auto-Regressive Moving Average (ARMA) models are simple, easy for implementation and provide acceptable accuracy [3, 4].

In this paper, we investigated time-series forecasting technique for WSN based on LMS algorithm with variable step size (LMS-VSS). Least-Mean-Square (LMS) adaptive algorithm as a data-reduction strategy in WSN has been firstly proposed by Santini and Römer [5]. The advantages of LMS algorithm is that it does not require any a-priori knowledge or modelling of the statistical properties of the observed signals, thus providing great flexibility and domain independence. Santini and Römer in [5] reported maximum data reduction of 92 % for the temperature measurements (on Intel Berkeley Lab dataset [6]) while retaining an accuracy of 0.5 °C.

The fact that a great percentage of the real-world wireless sensor networks are multi hop and hierarchy based, motivated us to exploit LMS-VSS on two different network topologies: star topology and cluster-based topology. The proposed algorithm is tested on real data obtained from the Intel Berkeley Research Laboratory sensor deployment [6]. LMS-VSS produce maximum data reduction of 95 % for error margin of 0.5 °C (for star topology) and around 97 % when data aggregation was taken into account (cluster-based topology).

The rest of the paper is organized as follows: the next section presents a brief overview of related work. The third section explains least mean square algorithm. Section four of this paper describes the LMS-VSS. The fifth and the sixth section explore LMS-VSS on star network and cluster-based topologies respectively. Finally, we conclude this paper in section seven.

2. Related Work

Although WSN attract a great interest among the researches for more then a decade, time series forecasting in WSN is still not explored enough. Only a few well known techniques from time series analyses have been implemented and evaluated on different WSN datasets.

The most popular paradigm is dual prediction scheme, which is introduced for the first time as *Dual Kalman Filter* [7], and later is adopted as *Dual Prediction Scheme* [3, 5]. Here, each node runs a filter (or a model) that estimates next sensor reading. The sink node (or the base station), runs exactly the same models for each sensor in the network and makes the same predictions. Since the sensor makes measurements of the sensed quantity, it can check weather the predicted value differs from the sensed value above the predefined threshold. If the difference is below the threshold, both the sensor and the sink accept the predicted value and store it in the memory instead of measured value. Otherwise, the sensor sends the actual value to the sink node. Both the sensor and the sink can apply the sensed value for updating the model, so they will have the same updated model again.

In [7], a stream management system is proposed, where Kalman Filter is used as a general and adaptive filtering solution at each source. The authors advocate the use of Kalman Filter as a prediction-correction mechanism, since it is flexible to the sensor noise and time variance.

Among different adaptive filters, Romer and Santini in [5] choose Least Mean Square as an adaptive

filtering technique for data prediction in WSN. They prefer LMS over Kalman Filter since it doesn't require any a-priori knowledge of the observed phenomena, which implies that the sink and the sensors don't need to agree on a pre-defined model. In this case, both the sensor and sink simultaneously estimate the prediction model and update the filter weights.

Le Borgne and Santini in [3] presents a general framework for DPS in which sensor nodes autonomously selects prediction model among K candidate prediction models, using racing mechanism [8] as a procedure for adaptive model selection. In order to evaluate their approach, the framework implements constant prediction model (CM) [9] and autoregressive (AR) models of orders 1–5. The results obtained from 14 different publicly available datasets show that CM outperforms AR models for time series with sudden and sharp changes, while in all other cases AR models perform significantly better than CM.

In [4], more complex prediction model is generated using ARIMA technique. In the **preliminary data collection** phase, sink receives n sensor readings from each sensor and use them to build an appropriate model for each sensor. The ARIMA model parameters are then propagated back to the sensors. In the second **adaptive data collection** phase, the sensor and the sink predict the next sensor reading using ARIMA model. If the readings significantly differ from the predicted values, the sensor should send the latest p readings to the sink so it can update the dataset, or both the sink and the sensor should switch to the first preliminary data collection phase. Choosing the right order for AR and MA component in ARIMA model is a tradeoff between forecasting accuracy and energy efficiency.

An adaptive Auto-Regression Moving Average (A-ARMA) technique with moving window in [10] employs low-order AR term and MA term. Each node locally computes the parameters of A-ARMA model using the last W sensor readings and propagates the model parameters to the sink node. For the next S readings, the sensor computes the root mean-square (RMS) between the real and the predicted sensor readings using the same A-ARMA model. If RMS is greater than the predefined error threshold, the sensor computes another A-ARMA model and sends the new parameters to the sink node.

In [11], three prediction-based approaches are proposed: Grey-Model-based approach [12], Kalman-Filter-based approach and a hybrid model that combines the previous two models. Evaluation done on real datasets shows that the last model outperforms others in terms of energy consumption. In order to avoid cumulative error, a double-queue mechanism is proposed to synchronize the predicted data at both sensor and sink node.

In [13], DPS for Wireless Body Sensor Network is presented using proportional–integral–derivative (PID) based algorithm for data prediction. Other approaches include “send on delta” technique [14], which calculates the difference between the current value and the predicted value.

Metrics used for measuring algorithms performance varies from author to author. Some authors tend to reduce the number of transmissions, thus they count the number of sent messages from the sensor node to the sink node, or the number of updates [3-5, 7]. Here the metric is the reduction of transmissions in percentage. Other way used for evaluating algorithm performance is by measuring the difference between the predicted and the true value, i.e. mean square error (MSE) or root mean square error (RMSE) [4, 7, 10]. These two metrics can be integrated into one, which is the ratio reduction/RMSE.

In our work, we implement dual prediction scheme using LMS with variable step size as a predictive filter. The evaluation was done with MSE and number of transmissions using real datasets from Intel Berkeley Research Laboratory. Since sensor readings are highly correlated in the space domain, we additionally consider cluster-based network topology, where each cluster performs data aggregation. The results of the simulation show that our technique outperforms LMS algorithm implemented by Santini [5].

3. Least Mean Square Algorithm

In this section, we present a brief explanation of the least mean square algorithm. A thorough explanation can be found in [6].

A linear adaptive filter samples a data stream/input signal at an instant n , which we will denote as $u[n]$ and calculates a prediction i.e., the output of the filter as $y[n] = \underline{w}^T[n] \cdot \underline{u}[n]$, which effectively is a linear combination of the previous N samples of the data stream (denoted as the vector \underline{u} which is of length M), weighed by the corresponding weight vector $\underline{w}[n]$ (also of length M). M is an integer parameter that the filter uses and it determines the “memory” of the filter i.e., how many previous input sample it will use.

The output $y[n]$ is then compared to the input signal or the sample of the data stream the filter tries to adapt to, denoted as $d[n]$. The prediction error $e[n]$ is then computed as: $e[n] = y[n] - d[n]$ and fed into the adaptation algorithm, so the filter weights can be updated. The vector $w[n]$ i.e., the weights are modified at each time step n in order to minimize the mean square error.

One of the most extensively used adaptive algorithms is the Least-Mean-Square algorithm (LMS). Although it is extremely simple, it has quite good performances and has found implementation in a variety of applications. [15][16]. The LMS algorithm is defined through the three equations:

1. The filter output:

$$y[n] = \underline{w}^T[n] \cdot \underline{u}[n],$$

2. The estimation error:

$$e[n] = d[n] - y[n],$$

3. The weight adaptation:

$$\underline{w}[n+1] = \underline{w}[n] + \mu \cdot \underline{u}[n] \cdot e[n],$$

where $w[k]$ and $x[k]$ denote the $M \times 1$ column vectors:

$$\begin{aligned} \underline{w}[k] &= [w_1[k], w_2[k], \dots, w_N[k]]^T \\ \underline{u}[k] &= [u[k-1], u[k-2], \dots, u[k-M]]^T \end{aligned} \quad (1)$$

With simple modification the filter structure from Fig. 2 (a) to the so-called predictive structure of Fig. 2 (b), the LMS algorithm can be used for prediction. Central to the successful prediction is delaying the current input value $u[n]$ by one time instance and use it as the reference signal $d[n]$. The filter then computes an estimation $\hat{u}[n]$ of the input signal at time instance n , as a linear combination of the N previous readings. Subtracting the prediction signal from the desired signal gives the value of the error which is fed back to adapt the filter weights.

Two parameters need to be defined for the adaptation process: the filter length M and the step-size parameter μ , which is important for updating the filter weights.

Given that \underline{w} and \underline{u} are $M \times 1$ vectors, it can easily be concluded that the LMS algorithm requires $2M + 1$ multiplications and $2M$ additions per iteration. [15].

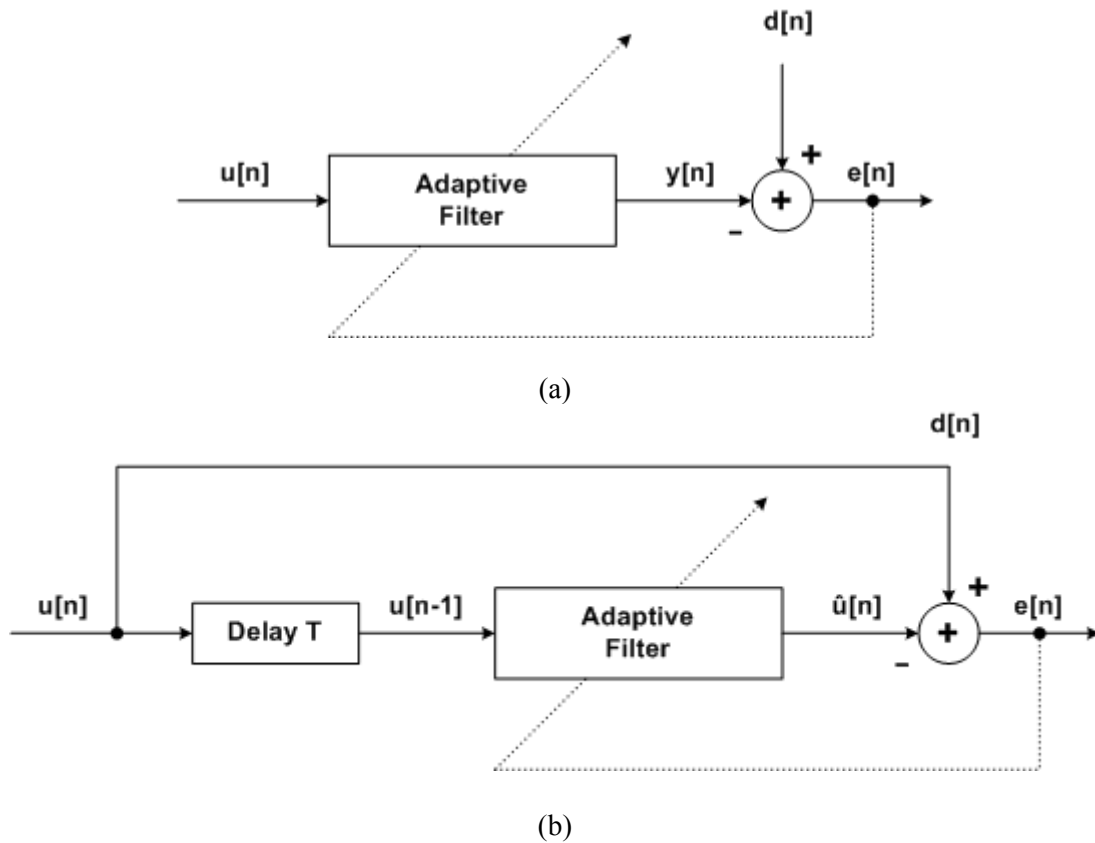


Fig. 2. (a) Basic structure of an adaptive filter; (b) Adaptive filter used for prediction.

The practical implementation of the LMS algorithm in the prediction scheme in WSN was introduced in [5] where identical predictive filters were introduced both at the source and at the sink. LMS dual prediction scheme (henceforth referred to as LMS-DPS) consists of simultaneously running an instance of the filter on both the node and the sink. There are three distinct modes of operation: initialization, normal and stand-alone. A node goes through the first only at the beginning and then switches between the normal and stand-alone modes. When a node is in the stand-alone mode it does not report its readings to the sink and this is where the energy savings are made.

3.1. Initialization Mode

First, the step-size parameter μ must be determined. A certain amount of data must be collected in the beginning, so a proper estimation of the step-size can be made. At this time, the node keeps sending the data to the sink without making predictions. Both the node and the sink compute the value of μ . To ensure convergence [15, 16] it must satisfy:

$$0 \leq \mu \leq \frac{2}{E_x}, \quad (2)$$

where

$$E_x = \frac{1}{N} \sum_{n=1}^N |x[n]|^2 \quad (3)$$

E_x is the mean power input and N is the number of iterations used to train the filter. Since the input mean power E_x is continually dependent on time, we can approximate \hat{E}_x by computing over the first M samples i.e., N data readings and easily obtain the upper bound of (2).

After the initialization phase, both the node and the sink will continue to execute the predictive algorithm and node will be switching between the following two modes of operation.

3.2. Normal Mode

Both the node and the sink simultaneously execute the predictive algorithm and make a prediction for the following reading by using the last M readings and accordingly update the filter weights on the prediction error. As stated in [15], if no a-priori knowledge is present, the initial weights should be zero. This is rather important, because:

- a) We do not possess any a priori knowledge of the data;
- b) Setting the initial weights to zero (and using the same values for the step-size parameter and for the filter length), ensures that any instance of the LMS will behave exactly the same at any arbitrary point of time t_n .

The node will stay in normal mode (collecting data and reporting it to the sink) as long as the prediction error is greater than the maximum error budget e_{max} . When the error drops below e_{max} for M consecutive iterations, then the node switches to stand-alone mode i.e., stops reporting the readings and consequently stops updating the weights.

3.3. Stand-alone Mode

In this mode, the node still collects data and makes predictions, but if the prediction error is below e_{max} , instead of the reading $u[n]$, it feeds the filter with the prediction $y[n]$, discards the real reading $u[n]$ and does not send it to the sink. This enables both instances of the filter to be consistent and no update of the weights is needed (the error is zero) thus reducing the computational overhead.

If the prediction error exceeds e_{max} the node switches to normal mode and reports the reading. When the node is in this mode, the filter instance at the sink side uses only the predicted readings as an approximation of the real value.

4. Least Mean Square Algorithm with Variable Step Size

The step-size parameter μ is critical for the convergence of the algorithm i.e., it determines the convergence speed, so choosing the right value for μ is of critical importance [17]. As we explain later on, there are practical boundaries for the values that μ can receive and with a simple estimation technique, we can determine them. And as we show in this section, we introduce a specific improvement to the LMS-DPS algorithm regarding the step-size parameter μ .

Since LMS-DPS uses single value for the step-size μ , a further improvement can be made, with the introduction of a least mean square algorithm with variable step-size (which we will refer to as LMS-VSS henceforth), where the step-size parameter μ has two distinct values:

1. Until a certain number of good predictions are made, μ has the maximum value according to (3) and two orders of magnitude smaller to ensure robustness [16].
2. After μ has sufficiently learned what kind of data the filter receives, it switches to a stable value, that is:

$$\mu_{new} = \frac{\mu_{old}}{M},$$

where M is the filter length, and $\mu_{old} = 2 \cdot E_x^{-1} \cdot 10^{-2}$.

This improvement accelerates the initial adaptation to the data, so an additional 3-5% reduction can be gained where the maximum error is sufficiently small, as can be seen in Fig. 4.

A crucial aspect is when the switch should be made. The best value for the number of consecutive iterations in stand-alone mode can be found as:

$$M \leq n \leq M^2,$$

where M is the filter length and n is the number of consecutive readings in stand-alone mode. The value $n=M^{3/2}$ yielded best results since it suited best both lower and higher filter lengths. For instance, if $M = 4$, using $n = M^2 = 16$ consecutive good predictions as a switch point is a good choice, but for $M = 10$, $n = M^2 = 100$ consecutive good predictions may never be reached, thus compromising performance. In this case, the choice $n = M = 10$ would be much more optimal. Also, note that the point of switching is determined such that both the node and sink can execute it at the same time and thus retain consistency of both algorithm instances.

One of the advantages of having only two distinct values for the step-size parameter, one to accelerate the initial weight adaptation and another for fine-tuning the weights after the adaptation is that it contributes to the overall data reduction without creating additional computational overhead to the algorithm. Additionally, without using a specific heuristic for a particular type of data, it can be used in other schemes.

In order to compare LMS-VSS and LMS-DPS, both algorithms were implemented in MatLab. For algorithms evaluation, a set of experimental data from Intel Berkeley Research Lab network [6] was used. The 54 Mica2Dot sensors deployed in the laboratory were equipped with weather boards and measured humidity, temperature, light and voltage values once every 31 seconds. The measurements were collected between February 28th and April 5th, 2004. The dataset includes 2.3 million readings collected from these sensors. For our evaluation we use only temperature and humidity readings at different locations in a lab space. We run the simulations for 50 different error margins e_{Max} (ranging from 0.1°C to 5°C).

We consider two basic network topologies on which we evaluated the LMS-VSS algorithm (Fig. 3). The first is the star topology, where every node sends its readings directly to the sink. The advantage of this topology is its simplicity and low latency communications between the sensors and the sink, but the sink must be within radio transmission range of all the individual sensors. If this is not possible, cluster-based network topology is a suitable alternative.

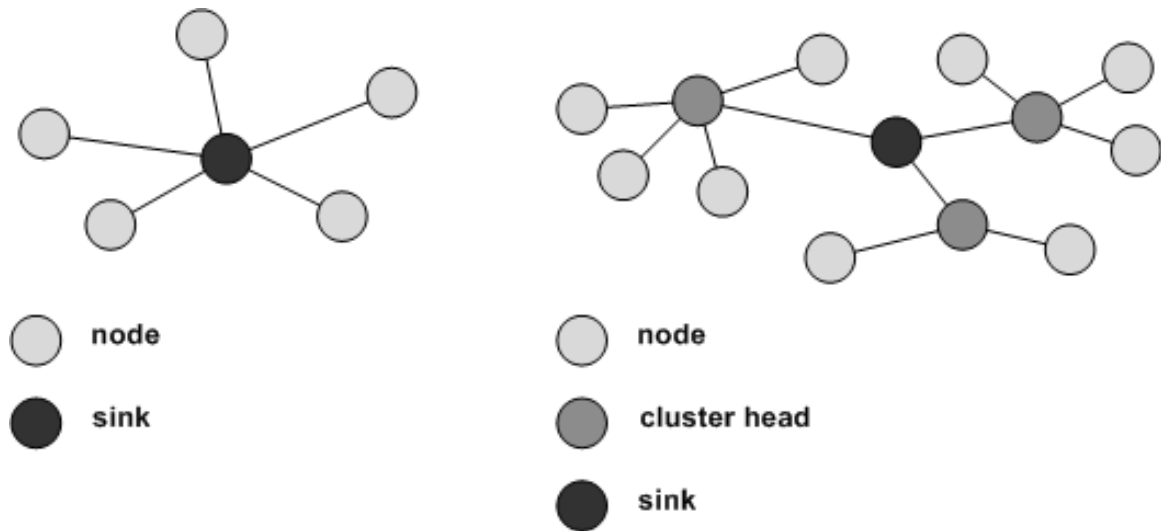


Fig. 3. Star network topology (left), Clustered-based network topology (right).

5. The LMS-VSS Algorithm in Star Topology

If a star network topology is considered, LMS-VSS algorithm achieves considerable reduction in number of transmissions. We use data readings from [6] and assume that each sensor sends its reading to the sink node. Fig. 4 shows the reduction gain when using LMS-DPS and LMS-VSS algorithms. The results are average for all 54 nodes from the Intel Berkeley Research Lab network [6]. LMS-DPS uses only one fixed step size $\mu=1.2 \cdot 10^{-5}$ and filter length $M=4$ and obtain the average savings in the entire network of around 88 % for error margin of 0.5 °C. LMS-VSS uses the same filter length, but uses the first $M=4$ data readings to calculate the initial value of μ and then after $M^{3/2}$ readings switches to $\mu_{\text{new}} = \mu_{\text{old}} \cdot M^{-1}$. LMS-VSS obtain average savings in the entire network of around 92 %, with evident reduction in mean square error (MSE).

In Fig. 5, we can see the improvement of LMS-VSS over the LMS-DPS algorithm for particular nodes. We chose these nodes because node 11 performs the best results (95 % reduction for 0.5 °C) and node 49 the worst (90 % reduction for 0.5 °C).

In addition, we investigated humidity readings from the same Intel network [6], where humidity is temperature corrected relative humidity, ranging from 0-100 %. The results for node 20 and node 10 are shown on Fig. 6 and Fig. 7 respectively. As it can be seen from the figures, LMS-VSS performs more than 5 % better results compared with LMS-DPS for error margin of 0.5 °C, and more than 10 % better results for error margin of 1°C and greater. For node 10, mean square error is given for both algorithms (Fig. 7). As can be seen from the figure, our algorithm gives smaller MSE.

6. The LMS-VSS Algorithm in Cluster-based Topology

Nodes clustering represent another way of prolonging WSN lifetime. Here, the sensor nodes are geographically grouped into clusters. In each cluster one representative node is chosen to be a cluster-head. Other nodes in the cluster are called members of the cluster and they report their readings to their cluster head, and cluster head forwards the messages directly to the sink. Note that except for the sink, we consider that all the nodes in the network have exactly the same characteristics, so even when a node is a cluster head, it still acts as a sensing node (and its readings are included in the computations for its respective cluster), with the additional duty to forward readings from cluster members. An example of such clustered-based network is given in [6], as presented on Fig. 8.

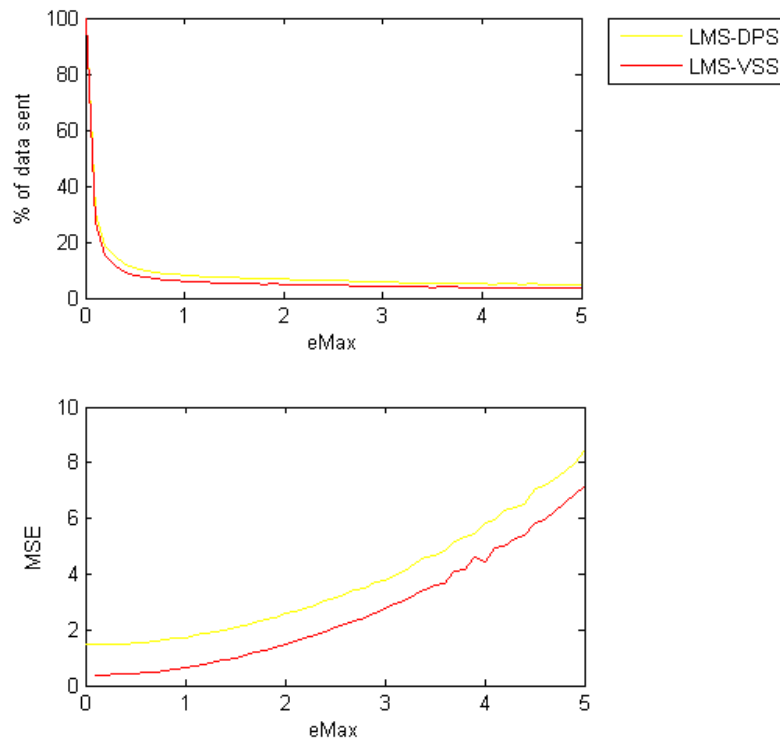


Fig. 4. The improvement of LMS-VSS over LMS-DPS algorithm for the entire Intel network (temperature).

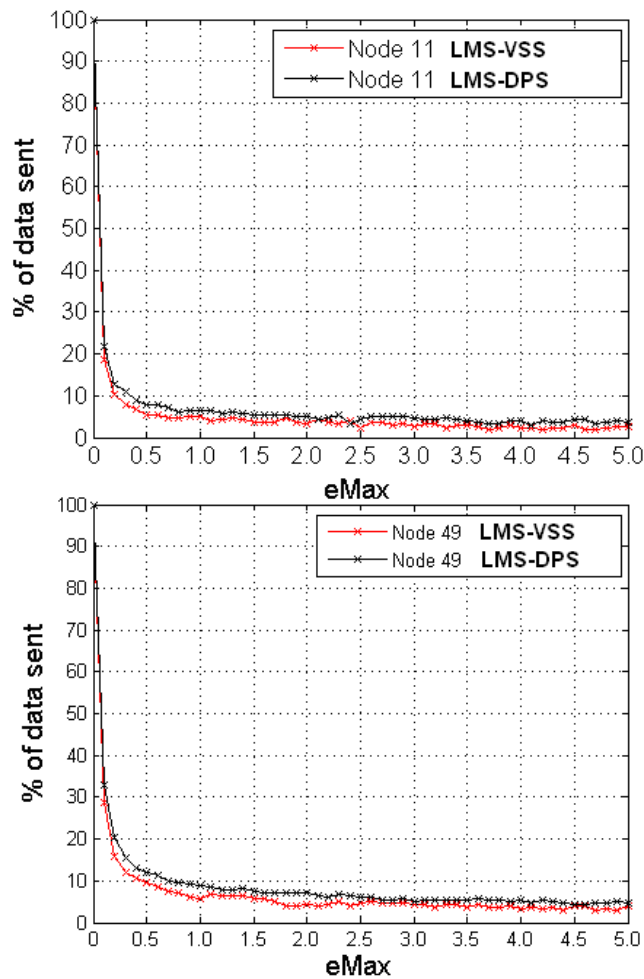


Fig. 5. Improvement of LMS-VSS over the LMS-DPS algorithm, filter length $M = 4$ (temperature).

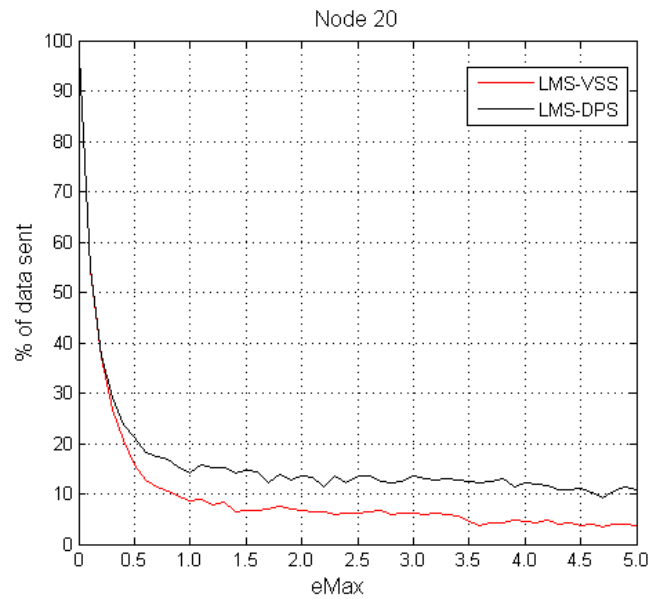


Fig. 6. Improvement of LMS-VSS over the LMS-DPS algorithm for humidity (node 20), filter length $M = 4$.

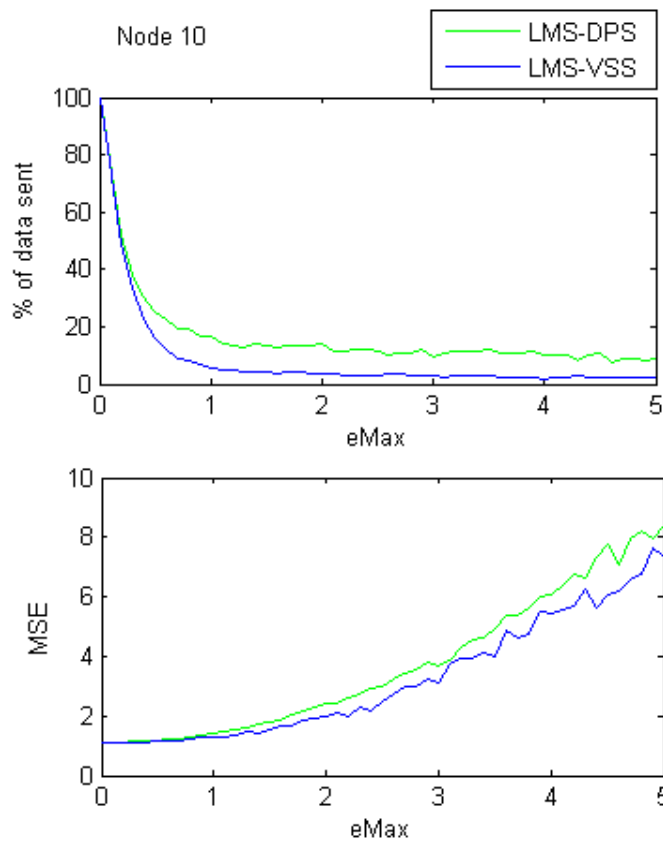


Fig. 7. Improvement of LMS-VSS over the LMS-DPS algorithm for humidity (node 10), filter length $M = 4$.

Our LMS-VSS algorithm was evaluated in this case by using MatLab simulation tool on the same Intel network [6]. We assume that each sensor sends its reading to the cluster head, and then cluster head resends the reading to the sink. As a result, each reading is sent twice, except the readings taken at the cluster heads. The clustering method we used is the simple k-means clustering, with $k = 10$. The value $k = 10$ was selected on a purely intuitive basis and it produced satisfactory results. Other clustering

methods may be used as well. As it can be seen from Fig. 8, the clustering parameter was geographic position, i.e., Euclidian distance.

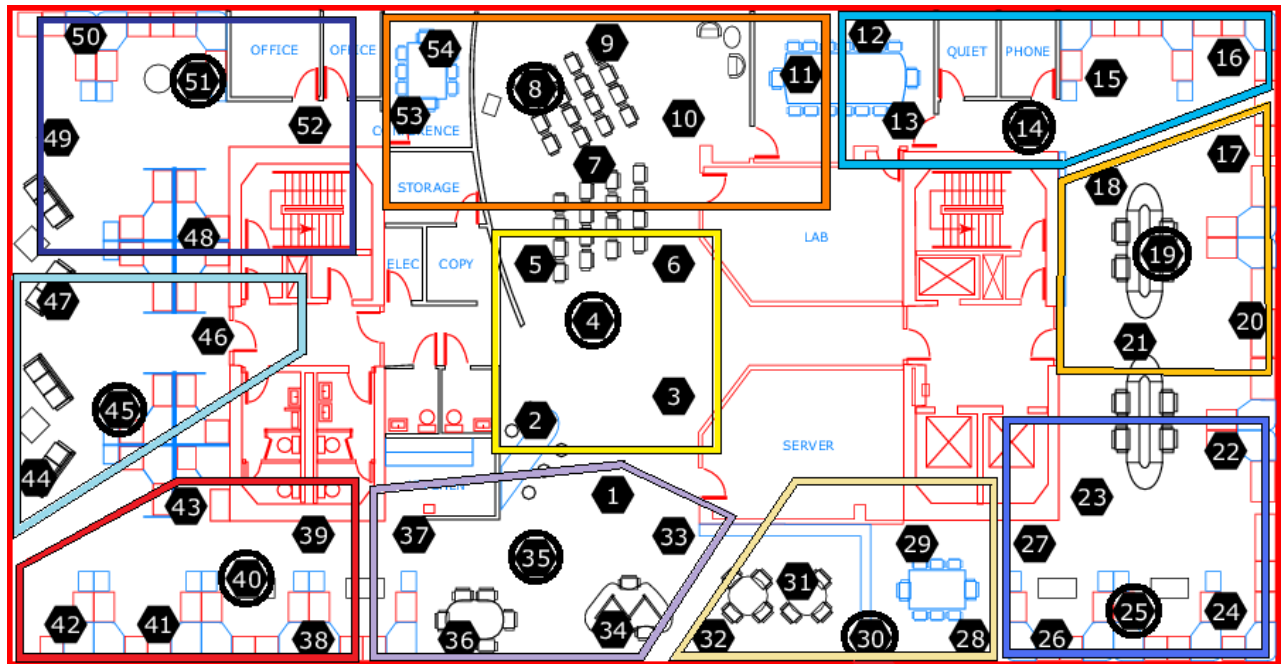


Fig. 8. A clustered view of the Intel Berkeley Research Lab wireless sensor network [6] (cluster heads are circled).

Additionally, we simulated data aggregation technique at cluster heads. In this scenario, every message carries exactly the same amount of data, since the cluster head aggregates the messages from its cluster members using a certain aggregation function (Average, Minimum, Maximum, etc) and forwards the aggregate to the sink.

The step size was $\mu = 1.2 \cdot 10^{-5}$ and the filter length was $M = 4$ for all the nodes, although changing the step-size or the length of the filter for a specific cluster can further improve the performance and the results.

We used the cluster containing nodes: 7, 8, 9, 10, 11, 53 and 54. As displayed in Fig. 9, the averages for this cluster show that there is a substantial gain of 5 % when using the LMS-VSS algorithm over the LMS-DPS algorithm. When data aggregation is assumed to be implemented in the cluster, the reduction is far greater and when it is used alongside the LMS-VSS algorithm it results in 97 % reduction of the total messages sent for the given error margin of 0.5 °C.

7. Conclusions

In this paper, we investigated time-series forecasting technique for WSN based on LMS algorithm with variable step size (LMS-VSS). Santini and Römer in [5] have implemented LMS algorithm without variable step size (LMS-DPS) and reported maximum data reduction of 92 % for the temperature measurements (on Intel dataset [6]) while retaining an accuracy of 0.5°C.

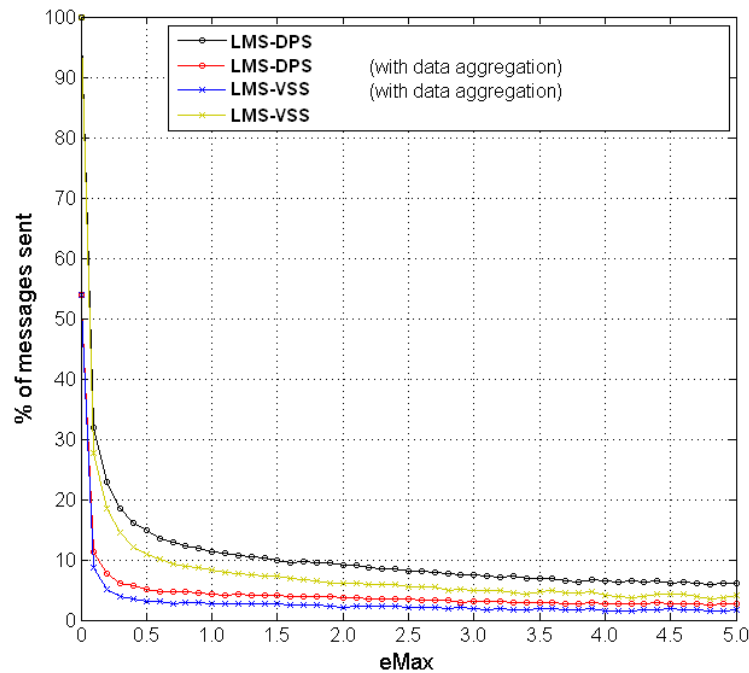


Fig. 9. Various savings in the cluster containing the nodes: 7, 8, 9, 10, 11, 53 and 54 (temperature).

We exploited our LMS-VSS on two different network topologies: star topology and cluster-based topology. We evaluated the LMS-VSS on Intel dataset [6]. Our algorithm outperforms LMS-DPS in terms of data reduction and root mean square error for all evaluated nodes. LMS-VSS performs data reduction of around 92 % for error margin of 0.5 °C (for the entire Intel network using star topology), and maximum data reduction of around 95 % for particular nodes. In cluster-based topology, when data aggregation was taken into account LMS-VSS achieves data reduction of around 97 %.

From the simulated results, we can conclude that star network is the most suitable network topology by means of energy saving, since each reading is sent only once. If sensors are not within each other radio range, cluster-based topology could be used, where each reading is being resent by the cluster head. By applying data aggregation at cluster head, this topology can achieve even greater data reduction in scenarios where losing data precision is affordable. It is obvious that the trade-off is application specific.

For future work, we intend to investigate our LMS-VSS on tree-based network topology, and to evaluate the results using different datasets (from Intel and other networks). We also plan to explore machine learning techniques for choosing the best values for the parameter μ or implement a scheme that will dynamically readjust the filter length.

References

- [1]. G. Anastasi, M. Conti, M. Di Francesco, and A. Passarella, Energy Conservation in Wireless Sensor Networks: A survey, *Ad Hoc Networks*, Vol. 7, No. 3, May, 2009, pp. 537-568.
- [2]. E. F. Nakamura, A. A. F. Loureiro, and A. C. Frery, Information Fusion for Wireless Sensor Networks: Methods, models, and classifications, *ACM Computing Surveys (CSUR)*, Vol. 39, No. 3, 2007, pp. 9-55.
- [3]. Y. L. Borgne, S. Santini, and G. Bontempi, Adaptive Model Selection for Time Series Prediction in Wireless Sensor Networks, *Signal Processing*, Vol. 87, 12, December, 2007, pp. 3010-3020.
- [4]. C. Liu, K. Wu, and M. Tsao, Energy Efficient Information Collection with the ARIMA Model in Wireless Sensor Networks, in *Proceedings of the IEEE Globecom*, Vol. 5, 2005, pp. 2470-2474.
- [5]. S. Santini and K. Römer: An Adaptive Strategy for Quality-Based Data Reduction in Wireless Sensor

- Networks, in *Proceedings of the 3rd International Conference on Networked Sensing Systems (INSS 2006)*, Chicago, IL, USA. June 2006, pp. 29-36.
- [6]. Intel lab data, Web Page, (Accessed on 06/06/2011) <http://db.lcs.mit.edu/labdata/labdata.html>
- [7]. A. Jain, E. Y. Chang and Y. -F. Wang: Adaptive Stream Resource Management using Kalman Filters, in *Proceedings of the ACM SIGMOD/PODS Conference (SIGMOD '04)*, Paris, France, June 2004.
- [8]. O. Maron, A. W. Moore, The racing algorithm: model selection for lazy learners, *Artificial Intell. Rev.*, 11, 1-5, 1997, pp. 193-225.
- [9]. I. Lazaridis, S. Mehrotra, Capturing sensor-generated time series with quality guarantee, in *Proceedings of the 19th International Conference on Data Engineering (ICDE '03)*, Bangalore, India, 2003.
- [10]. J. Lu, F. Valois, M. Dohler, and M. -Y. Wu, Optimized Data Aggregation in WSNs using Adaptive ARMA, in *Proceedings of the SENSORCOMM*, 2010, pp. 115-120.
- [11]. Guiyi Wei, Yun Ling, Binfeng Guo, Bin Xiao and Athanasios V. Vasilakos, Prediction-based Data Aggregation in Wireless Sensor Networks: Combining Grey Model and Kalman Filter, *Computer Communications*, 34, 6, 2011, pp. 793-802.
- [12]. J. L. Deng, Introduction to Grey system theory, *Journal of Grey System*, 1, 1, 1989, pp. 1-24.
- [13]. Feng Xia, Zhenzhen Xu, Lin Yao, Weifeng Sun, Mingchu Li, Prediction-Based Data Transmission for Energy Conservation in Wireless Body Sensors, in *Proceedings of the Int. Workshop on Ubiquitous Body Sensor Networks (UBSN), in Conjunction with the 5th Annual Int Wireless Internet Conf (WICON)*, Singapore, March 2010.
- [14]. Young S. Suh, Send-On-Delta Sensor Data Transmission with A Linear Predictor, *Sensors*, 2007, 7, 4, pp. 537-547.
- [15]. S. Haykin, Least-Mean-Square Adaptive Filters, Edited by S. Haykin, *Wiley-Interscience*, New York, 2003.
- [16]. G. Moschytz and M. Hofbauer: Adaptive Filter, *Springer Verlag*, Berlin, 2000.
- [17]. R. Kwong and E. W. Johnston, A Variable Step Size LMS Algorithm, *IEEE Trans. on Signal Process.*, Vol. 40, 1992, pp. 1633 - 1642.

2012 Copyright ©, International Frequency Sensor Association (IFSA). All rights reserved.
(<http://www.sensorsportal.com>)



SENSORS WEB PORTAL 

- MEMS
- NEMS
- NANOSENSORS
- SMART SENSORS

All about SENSORS
<http://www.sensorsportal.com>

The advertisement features a dark blue background with a grid pattern. On the right side, there is a computer monitor displaying the Sensors Web Portal website. The text is primarily in yellow and white, with the IFSA logo in white and yellow. The overall design is modern and professional.

Guide for Contributors

Aims and Scope

Sensors & Transducers Journal (ISSN 1726-5479) provides an advanced forum for the science and technology of physical, chemical sensors and biosensors. It publishes state-of-the-art reviews, regular research and application specific papers, short notes, letters to Editor and sensors related books reviews as well as academic, practical and commercial information of interest to its readership. Because of it is a peer reviewed international journal, papers rapidly published in *Sensors & Transducers Journal* will receive a very high publicity. The journal is published monthly as twelve issues per year by International Frequency Sensor Association (IFSA). In addition, some special sponsored and conference issues published annually. *Sensors & Transducers Journal* is indexed and abstracted very quickly by Chemical Abstracts, IndexCopernicus Journals Master List, Open J-Gate, Google Scholar, etc. Since 2011 the journal is covered and indexed (including a Scopus, Embase, Engineering Village and Reaxys) in Elsevier products.

Topics Covered

Contributions are invited on all aspects of research, development and application of the science and technology of sensors, transducers and sensor instrumentations. Topics include, but are not restricted to:

- Physical, chemical and biosensors;
- Digital, frequency, period, duty-cycle, time interval, PWM, pulse number output sensors and transducers;
- Theory, principles, effects, design, standardization and modeling;
- Smart sensors and systems;
- Sensor instrumentation;
- Virtual instruments;
- Sensors interfaces, buses and networks;
- Signal processing;
- Frequency (period, duty-cycle)-to-digital converters, ADC;
- Technologies and materials;
- Nanosensors;
- Microsystems;
- Applications.

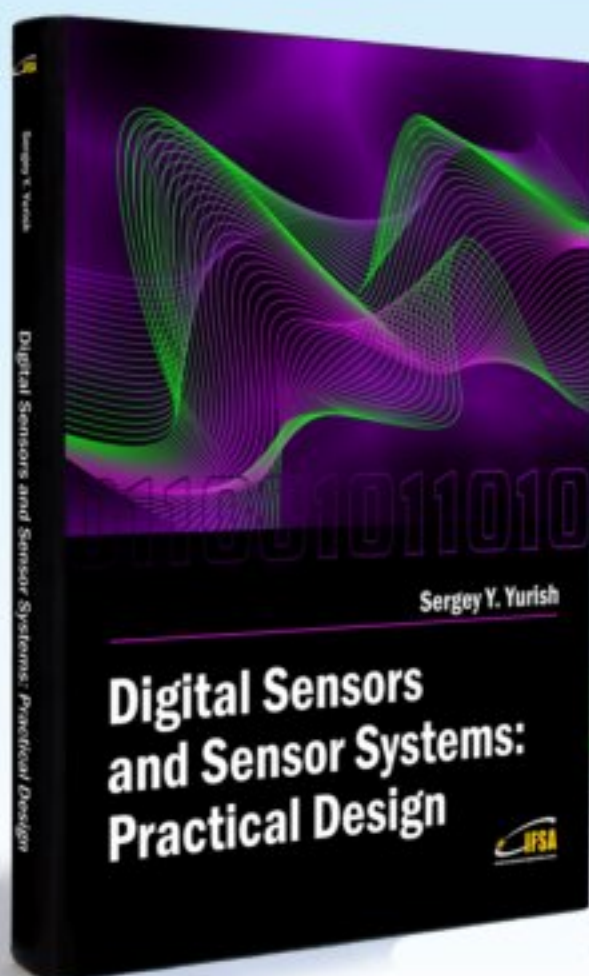
Submission of papers

Articles should be written in English. Authors are invited to submit by e-mail editor@sensorsportal.com 8-14 pages article (including abstract, illustrations (color or grayscale), photos and references) in both: MS Word (doc) and Acrobat (pdf) formats. Detailed preparation instructions, paper example and template of manuscript are available from the journal's webpage: <http://www.sensorsportal.com/HTML/DIGEST/Submission.htm> Authors must follow the instructions strictly when submitting their manuscripts.

Advertising Information

Advertising orders and enquires may be sent to sales@sensorsportal.com Please download also our media kit: http://www.sensorsportal.com/DOWNLOADS/Media_Kit_2012.pdf

Digital Sensors and Sensor Systems: Practical Design will greatly benefit undergraduate and at PhD students, engineers, scientists and researchers in both industry and academia. It is especially suited as a reference guide for practitioners, working for Original Equipment Manufacturers (OEM) electronics market (electronics/hardware), sensor industry, and using commercial-off-the-shelf components, as well as anyone facing new challenges in technologies, and those involved in the design and creation of new digital sensors and sensor systems, including smart and/or intelligent sensors for physical or chemical, electrical or non-electrical quantities.



"It is an outstanding and most completed practical guide about how to deal with frequency, period, duty-cycle, time interval, pulse width modulated, phase-shift and pulse number output sensors and transducers and quickly create various low-cost digital sensors and sensor systems ..." (from a review)

Order online:

http://www.sensorsportal.com/HTML/BOOKSTORE/Digital_Sensors.htm



www.sensorsportal.com